



The Dam Lake Dam On the Sugar Camp Chain

This is the old Log Dam in 1914

This was replaced by a concrete structure before 1927

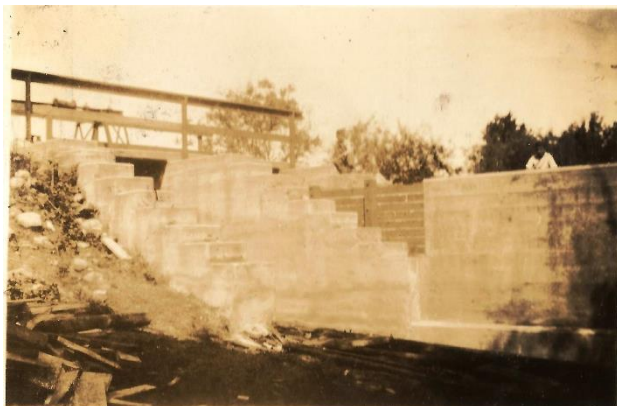
The new Concrete dam started with two openings, one had the gate for controlling the water level.



installed



A few years later a fishway was



Here is the complete dam in 1933.

This remained in place until the 1960s when a new Single gate dam with no fishway was installed farther away from the resort on the earthen causeway.



Below is the dam in place today

X marks the site of the 1930 dam

